

Single/Multiple Cell Tester



*Storage Battery Test Equipment
"for Experts...from the Experts!"*

Albercorp.

Albércorp.

Albércorp invented the first fully automated Battery Capacity Test System in 1974 and has been the leader in this field ever since. Commonly referred to as "The Battery Test Experts," Albércorp's innovative designs continue to set the standards for battery testing.

Our customer training programs and battery seminars have trained thousands of people all over the world on how to test batteries. We pride ourselves in "Doing Things Right" and have earned a reputation for quality equipment and excellent service.

Single Cell Tester (SCT-200) Automatically discharges and recharges one or two cells online!

The SCT-200 is a discharge-recharge test system that tests a single 2 volt cell either offline or online. A user-friendly, PC based system lets you program a cell discharge to an end voltage at either constant current or power. When the end discharge voltage is reached, the SCT-200 automatically recharges the cell to a user-programmed level. You may use the system to perform either a Capacity (Performance) test or a multi-step Service (Profile) test.

If a cell or module is identified as a potential failure, you can resolve the issue by conducting a load test per IEEE standards. The load test results help settle warranty questions, as well as verify whether the process used for identifying the cell was valid. This makes the SCT-200 an exceptionally useful maintenance tool.

The SCT-200 is a great complement to the Albércorp Cellcorder. The Cellcorder identifies problem cells, and the SCT-200 confirms the findings. Besides resolving warranty claims, the SCT-200 can, in conjunction with the Cellcorder, establish Internal Cell Resistance baseline values.

The Cellcorder - SCT-200 combination is an inexpensive alternative to a full string capacity test system. If a number of cells within a string show 25% or greater than the average internal resistance, and two of those cells are capacity tested with the SCT-200 and fail, an intelligent replacement decision can be made. Using this test method, if it appears that 8% or more of the cells are failing, and



Single/Multiple Cell Tester

the string is several years old, then it should be scheduled for replacement as soon as possible. Before making a final decision, consult the battery manufacturer for their opinion.

While not as complete as a full string capacity test, the Cellcorder - SCT-200 combination has the added advantage that it can be used with the string online.



System Description

1. PC Based Controller:

All test parameters are programmed using a user-friendly Windows program. Easy to read screens show real time data in tabular and graphed form.

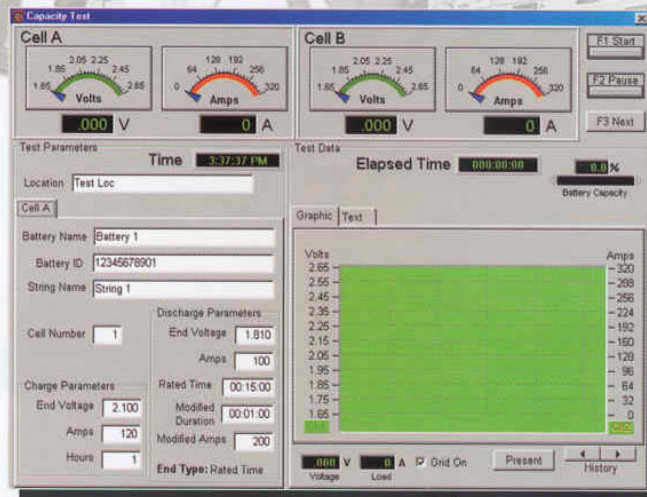
2. The Discharge/Charge Unit: The SCT-200, which one person can carry, contains two load modules and one programmable power supply. Use the load modules either separately (to test two different cells sequentially) or combined (to test one cell at high current). The power supply serves as a programmable, current limited charger capable of delivering up to 120 amps.

Features

- Unattended operation, just program and go
- Easy to use
- Can be used online
- Portable - one person operation
- Cellcorder plus an SCT handles all battery tests and measurements required to maintain a reliable battery system.

Operating Screen

The Capacity Test screen (at right) shows the real time status of the test in progress. Large analog and digital indicators show actual voltage and charge/recharge current values. A graphical or text trend display allows the test data to be reviewed while the test is running.



Visit www.alber.com for more product information

Specifications

System

	Reading Range	Control Accuracy
Discharge Current	(0-600A one cell/0-300A two cells)	± 1% (± 2 Amp)
Discharge Voltage	2.08 VDC to 1.75 VDC	± 0.01 volt
Charging Voltage	Maximum 2.60 VDC	± 0.01 volt
Charging Current Limit	0 to 120 Amps	(± 1 Amp)

Miscellaneous

Controller	Laptop PC, Windows 95, 98, NT or 2000
Printer	(Optional)
Power	120 VAC 60Hz 1.5A / 250 VAC 50Hz 1.5A
Connectors	All interconnection cables included

Dimensions

	Wide	Deep	High	Weight
SCT-200	13"	23.5"	14"	55 lbs.

Warranty

Full one year from date of purchase

*Specifications subject to change without notice

GSA License #GS 07F 0065M

Albercorp.

990 S. Rogers Circle, Suite 11 / Boca Raton, Florida 33487
561-997-2299 / Fax 561-997-5588
www.alber.com / e-mail alber@alber.com